

# Netwealth Superannuation Services Pty Ltd

## Relevant Interests and Duties

March 2025

---

Netwealth Superannuation Services Pty Ltd

ABN 80 636 951 310

AFSL No. 528032

RSE License L0003483

Level 6/180 Flinders Street  
Melbourne VIC 3000

PO Box 336  
South Melbourne VIC 3205

Document Classification: General Use

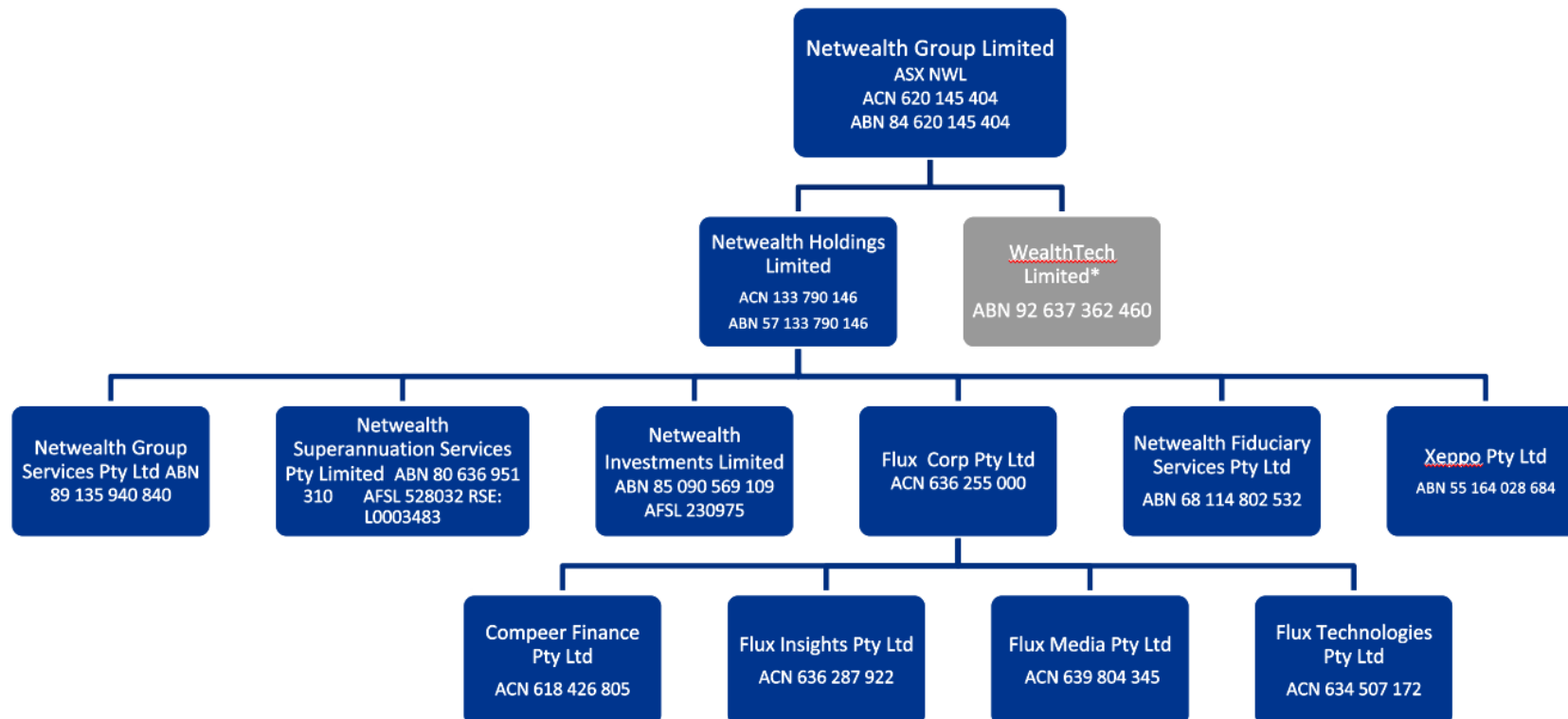
*This document is for general use. Modification of content is prohibited unless you have express prior written consent from Netwealth Superannuation Services Pty Ltd.*

## Netwealth Superannuation Services Pty Ltd (NSS)

### Company Structure

NSS is a wholly owned subsidiary of Netwealth Holdings Limited, which is wholly owned by Netwealth Group Limited. Netwealth Group Limited is listed on the ASX. Netwealth Investments Limited provides platform, custody and administration services to NSS under a material outsourcing agreement.

Netwealth Groups Limited's Corporate Structure:



\*WealthTech Pty Ltd is not currently operational.

## Relevant Interests and Duties

As defined in Prudential Standard SPS 521 Conflicts of Interest:

- A 'relevant duty' refers to any duty owed by the Registrable Superannuation Entity (RSE) licensee, or a responsible person of the RSE licensee, to beneficiaries or to any other person.
- A 'relevant interest' of an RSE licensee, an associate of the RSE or responsible person of the RSE licensee refers to any interest, gift, emolument, or benefit, whether pecuniary or non-pecuniary, directly, or indirectly held by the RSE licensee, the associate, or the responsible person.

| RESPONSIBLE PERSON /<br>RELEVANT DUTIES TO NSS   | NETWEALTH<br>DIRECTORSHIPS / POSITION   | OTHER<br>DIRECTORSHIPS / POSITIONS  | RELEVANT DISCLOSED PERSONAL<br>INTERESTS  |
|--|---|---|---|
| <i>Note: Gifts and benefits received in the FY2021 – FY2024 are disclosed where their value was greater than \$300.</i>                  |   |   |   |
| Rita Harris<br><br>Chair:<br>- NSS Board<br><br>Member:<br>- Audit, Risk & Compliance Committee<br>- Superannuation Investment Committee | <b>Independent Director:</b><br><br>Netwealth Superannuation Services Pty Ltd (NSS)<br>ABN 80 636 951 310 | <b>Directorships:</b><br><br>The School of St Jude<br>ABN 86 966 180 821 (& Secretary)<br><br><b>Other Positions:</b><br><br>Fullbridge Capital Pty Ltd<br>ABN 20 647 901 004(Advisory Board Member)<br><br>Victorian Local Governance Association Incorporated<br>ABN 25 401 385 085 (Governance and Risk Committee Member)<br><br>Real Asset Capital Partners<br>ABN 69 648 366 223 (Governance Board Member) | Directors' fees and superannuation<br><br>Member of the NSMF<br><br>Financial Adviser – Scholten Collins McKissock <sup>1</sup><br><br>Gifts and benefits:<br>• Dreams2Live4 event 2023 (RSM) |

|   |   |   |   |
|---|---|---|---|
| <b>Lewis Bearman</b><br><br>Chair<br>- Superannuation Investment Committee<br><br>Member<br>- NSS Board<br>- NSS Audit, Risk and Compliance Committee | <b>Independent Director:</b><br><br>Netwealth Superannuation Services Pty Ltd (NSS)<br>ABN 80 636 951 310 | <b>Directorships:</b><br><br>Lewjen Maaron Investments Pty Ltd<br>ACN 119 591 490 (& Secretary)<br><br>QCD Fund No.2 Pty Ltd<br>ACN 631 182 066<br><br>QCD Fund Pty Ltd<br>ABN 39 616 809 735 (& Secretary)<br><br>QFI Fund Pty Ltd<br>ACN 623 233 456<br><br>QLDF Pty Ltd<br>ABN 58 629 885 230<br><br>QMD Fund Pty Ltd<br>ABN 11 628 444 897<br><br>QREO Fixed A II Pty Ltd<br>ABN 30 626 691 263<br><br>QREO Fixed A Pty Ltd<br>ABN 79 608 977 215<br><br>QREO Fixed Pty Ltd<br>ABN 56 606 711 013<br><br>QREO Growth A II Pty Ltd<br>ABN 74 626 691 450<br><br>QREO Growth A III Sub Pty Ltd<br>ABN 96 660 568 605<br><br>QREO Growth A Pty Ltd<br>ABN 83 608 977 233<br><br>QREO Growth Pty Ltd<br>ABN 54 606 711 004<br><br>QREO Nominee Pty Ltd<br>ACN 609 643 898 | <b>Directors' fees</b><br><br>Account holder NIL products and family held NIL account<br><br>Financial Adviser – Scholten Collins McKissock <sup>1</sup><br><br>No gifts or benefit disclosed |
|---|---|---|---|

|  |  |  |   |
|--|--|--|---|
|  |  | <p>QSD Fund Feeders Pty Ltd<br/>ABN 32 620 098 660 (&amp; Secretary)</p> <p>QSD Fund Pty Ltd<br/>ABN 30 620 098 651</p> <p>Qualitas BTR Impact Fund Pty Ltd<br/>ACN 636 795 974</p> <p>Qualitas DCI Holdings Pty Ltd<br/>ACN 660 334 314</p> <p>Qualitas Diversified Credit Investments Pty Ltd<br/>ABN 85 660 336 069</p> <p>Qualitas Securities Pty Ltd<br/>ABN 90 136 451 128</p> <p>Qualitas Seniors Housing No.1 Pty Ltd<br/>ABN 92 630 945 256</p> <p>QUMF No. 1 Pty Ltd<br/>ABN 30 628 040 264</p> <p><b>Other Positions:</b></p> <p>Real Asset Capital Partners<br/>ABN 69 648 366 223 (Governance Board Chair)</p> <p>True Infrastructure Management Pty Ltd<br/>ABN 72 640 187 202</p> |   |
| <p>Michael Heine</p> <p>Member:</p> <ul style="list-style-type: none"> <li>- NSS Board</li> <li>- Audit, Risk &amp; Compliance Committee</li> <li>- Superannuation Investment Committee</li> </ul> | <p><b>Non-Executive Director:</b></p> <p>Netwealth Investments Limited (NIL)<br/>ABN 85 090 569 109</p> <p>Netwealth Holdings Limited (NHL)<br/>ABN 57 133 790 146</p> | <p><b>Directorships:</b></p> <p>Heine Brothers Pty Ltd<br/>ABN 28 006 819 718 (&amp; Secretary)</p> <p>Heine Fiduciary Services Pty Ltd<br/>ACN 627 727 851 (&amp; Secretary)</p>  | <p>Directors' fees and superannuation</p> <p>Majority shareholder NWL (indirect) and family NWL shareholdings</p> <p>Member of the NSMF</p> |

|  |   |  |   |
|--|---|--|---|
|  | Netwealth Group Limited (NWL)<br>ABN 84 620 145 404                   | APS Melb Pty Ltd<br>ABN 55 010 521 810                                 | Account holder NIL products and family held NIL accounts  |
|  | Netwealth Group Services Pty Ltd<br>ABN 89 135 940 840                | Lesmic Nominees Pty. Ltd.<br>ACN 004 978 036 (& Secretary)             | Use of ANZ for private banking and loans  |
|  | Netwealth Fiduciary Services Pty Ltd<br>ABN 68 144 802 532            | Meyer Heine Line Pty Ltd<br>ACN 628 192 647 (& Secretary)              | Use of CBA for private banking  |
|  | Netwealth Superannuation Services Pty Ltd (NSS)<br>ABN 80 636 951 310 | MMH Investment Holdings Pty Ltd<br>ABN 37 138 015 826 (& Secretary)    | Tax Adviser – SW  |
|  | WealthTech Limited<br>ABN 92 637 362 460                              | Net Wealth Dot Com Pty Ltd<br>ABN 72 004 892 915 (& Secretary)         | Gifts or benefits:  |
|  |   | Snaffles Asset Management Pty Ltd.<br>ABN 75 117 787 569 (& Secretary) | <ul style="list-style-type: none"> <li>• Australian Open 2022 (ANZ)</li> <li>• Australian Open 2023 (ANZ)</li> <li>• Australian Open 2024 (ANZ)</li> <li>• Dinner 2024 (Goldman Sachs)</li> </ul> |
|  |   | Swanston Mortgage Pty Ltd.<br>ABN 61 004 921 135 (& Secretary)         |   |
|  |   | Wealth Investments Pty Ltd.<br>ACN 004 189 669 (& Secretary)           |   |
|  |   | MMH Family Foundation Pty Ltd<br>ABN 68 640 158 461                    |   |
|  |   | Michael Heine Family Foundation<br>ABN 41 858 725 289                  |   |
|  |   | MMH Custodians Pty Ltd<br>ACN 674 237 506                              |   |

|   |   |  |  |
|---|---|--|--|
| <p><b>Sally Freeman</b></p> <p>Member:</p> <ul style="list-style-type: none"> <li>- NSS Board</li> <li>- Audit, Risk &amp; Compliance Committee</li> <li>- Superannuation Investment Committee</li> </ul> | <p><b>Non-Executive Director:</b></p> <p>Netwealth Investments Limited (NIL)<br/>ABN 85 090 569 109</p> <p>Netwealth Holdings Limited (NHL)<br/>ABN 57 133 790 146</p> <p>Netwealth Group Limited (NWL)<br/>ABN 84 620 145 404</p> <p>Netwealth Group Services Pty Ltd<br/>ABN 89 135 940 840</p> <p>Netwealth Fiduciary Services Pty Ltd<br/>ABN 68 144 802 532</p> <p>Netwealth Superannuation Services Pty Ltd (NSS)<br/>ABN 80 636 951 310</p> <p>WealthTech Limited<br/>ABN 92 637 362 460</p> | <p><b>Directorships:</b></p> <p>Maggie MDAB Pty. Ltd<br/>ABN 18 102 205 176 (&amp; Secretary)</p> <p>Sally Freeman Consulting Pty Ltd<br/>ABN 78 636 871 111 (&amp; Secretary)</p> <p>Eastern Health<br/>ABN 68 223 819 017</p> <p>Regional Investment Corporation<br/>ABN 99 528 049 038</p> <p>Melbourne Football Club Limited<br/>ABN 27 005 686 902</p> <p>Suburban Rail Loop Authority<br/>ABN 47 474 521 596</p> <p>Director &amp; Chair of Audit Committee of Regis Healthcare Limited<br/>ABN 11 125 203 054 and its subsidiaries:</p> <ul style="list-style-type: none"> <li>• Regis Aged Care Pty Ltd ABN 75 125 223 645</li> <li>• CPSM Pty Ltd ABN 26 145 835 981</li> <li>• Retirement Care Australia (Logan) Pty Ltd ABN 55 113 960 964</li> <li>• Regis Group Proprietary Limited ABN 17 084 720 561</li> <li>• Retirement Care Australia Operations (2) Pty Ltd ABN 16 113 961 103</li> </ul> <p>Chair of Aioi Nissay Dowa Insurance Company Australia Pty Ltd<br/>ABN 11 132 524 282</p> <p><b>Other Positions:</b></p> | <p>Directors' fees and superannuation</p> <p>Direct NWL Shareholder</p> <p>Member of the NSMF</p> <p>Account holder in NIL products</p> <p>Financial Adviser - Strategic Financial Solutions<sup>1</sup></p> <p>No gifts or benefits disclosed</p> |
|---|---|--|--|

|  |   |   |   |
|--|---|---|---|
|  |   | <p>Commonwealth Games Australia Ltd<br/>ABN 55 165 736 898 (Audit Committee Member)</p> <p>Caulfield Grammar School<br/>ABN 79 004 170 772 (Audit Committee Member)</p> <p>HealthShare Victoria<br/>ABN 28 087 208 309 (Audit Committee Member)</p>   |   |
| <p><b>Sarah Brennan</b></p> <p>Chair:</p> <ul style="list-style-type: none"> <li>- Audit, Risk &amp; Compliance Committee</li> </ul> <p>Member:</p> <ul style="list-style-type: none"> <li>- NSS Board</li> <li>- Superannuation Investment Committee</li> </ul> | <p><b>Non-Executive Director:</b></p> <p>Netwealth Investments Limited (NIL)<br/>ABN 85 090 569 109</p> <p>Netwealth Holdings Limited (NHL)<br/>ABN 57 133 790 146</p> <p>Netwealth Group Limited (NWL)<br/>ABN 84 620 145 404</p> <p>Netwealth Group Services Pty Ltd<br/>ABN 89 135 940 840</p> <p>Netwealth Fiduciary Services Pty Ltd<br/>ABN 68 144 802 532</p> <p>Netwealth Superannuation Services Pty Ltd (NSS)<br/>ABN 80 636 951 310</p> <p>WealthTech Limited<br/>ABN 92 637 362 460</p> | <p><b>Directorships:</b></p> <p>NobleOak Life Limited (Chair)<br/>ABN 85 087 648 708</p> <p>Eastern Town Holdings Pty Ltd<br/>ABN 73 603 091 247</p> <p>Guinness Investments Pty Ltd<br/>ACN 169 419 612</p> <p>BFMS Consulting Pty Ltd<br/>ABN 93 610 615 800</p> <p>Argo Global Listed Infrastructure Limited<br/>ABN 23 604 986 914</p> <p>Credit Corp Group Limited<br/>ABN 33 092 697 151</p> <p><b>Other positions:</b></p> <p>Prime Capital Securities Pty Ltd<br/>ABN 64 623 195 871 (Non-Executive member of the Advisory Board)</p> <p>Investment Trends Pty. Limited<br/>ABN 14 107 485 656 (Chair and Non-Executive member of the Advisory Board)</p> | <p>Directors' fees and superannuation</p> <p>Direct NWL shareholder</p> <p>No gifts or benefits disclosed</p> |



|  |   |   |   |
|--|---|---|---|
| <p>Andrew Holden</p> <ul style="list-style-type: none"> <li>- General Manager, Office of the Trustee</li> <li>- Company Secretary</li> </ul>   | <p><b>Company Secretary / General Manager:</b></p> <p>Netwealth Superannuation Services Pty Ltd (NSS)<br/>ABN 80 636 951 310</p>  | <p>N/A</p>  | <p>Salary and superannuation</p> <p>Direct NWL shareholder</p> <p>Member of the NSMF</p> <p>Account holder in NIL products and family held NIL accounts</p> <p>Gifts or benefits:</p> <ul style="list-style-type: none"> <li>• Australian Open 2021 (ANZ)</li> </ul>  |
| <p>Cory Smith</p> <ul style="list-style-type: none"> <li>- Chief Operating Officer, Office of the Trustee</li> <li>- Company Secretary</li> </ul>  | <p><b>Company Secretary / Chief Operating Officer:</b></p> <p>Netwealth Superannuation Services Pty Ltd (NSS)<br/>ABN 80 636 951 310</p>  | <p>N/A</p>  | <p>Salary and superannuation</p> <p>Direct NWL shareholder</p> <p>Gifts or benefits:</p> <ul style="list-style-type: none"> <li>• Super &amp; Wealth Summit 2021 (Deloitte)</li> </ul>  |
| <p><b>Matt Heine</b></p> <p>Senior Manager Responsible Person as Chief Executive Officer &amp; Managing Director of Netwealth Investments Limited (NIL) – material outsourced serviced provider to NSS</p> | <p><b>Chief Executive Officer &amp; Managing Director:</b></p> <p>Netwealth Investments Limited (NIL)<br/>ABN 85 090 569 109</p> <p>Netwealth Holdings Ltd (NHL)<br/>ABN 57 133 790 146</p> <p>Netwealth Group Limited (NWL)<br/>ABN 84 620 145 404</p> <p>Netwealth Group Services Pty Ltd<br/>ABN 89 135 940 840</p> <p>Netwealth Fiduciary Services Pty Ltd<br/>ABN 68 144 802 532</p> | <p><b>Directorships:</b></p> <p>Heine Brothers Pty Ltd<br/>ABN 28 006 819 718</p> <p>Heine Sight Superannuation Pty Ltd<br/>ACN 633 205 562</p> <p>Heine Fiduciary Service Pty Ltd<br/>ACN 627 727 851 (&amp; Secretary)</p> <p>APS Melb Pty Ltd<br/>ACN 010 521 810</p> <p>Heine Sight Investments Pty Ltd<br/>ACN 605 730 667</p> | <p>Directors' fees and superannuation</p> <p>Shareholder NWL (direct and indirect) and family NWL shareholdings</p> <p>Account holder in NIL products and family held NIL accounts</p> <p>Gifts or Benefits</p> <ul style="list-style-type: none"> <li>• Dinner 2024 (Goldman Sachs)</li> <li>• Australian Open 2024 (ANZ)</li> </ul> |

|  |   |   |   |
|--|---|---|---|
|  | WealthTech Limited<br>ABN 92 637 362 460<br><br>Xeppo Pty Ltd<br>ABN 55 164 028 684   | Heine Sight Investments No.2 Pty Ltd<br>ACN 628 343 831 (& Secretary)<br><br>Heine Sight Nominees Pty Ltd<br>628 343 224 (& Secretary)<br><br>M & A Heine Family Pty Ltd as Trustee for<br>the Suhara Foundation<br>ABN 93 820 030 467  |   |
| <b>Hayden Stockdale</b><br><br>Senior Manager Responsible Person as Chief<br>Financial Officer of Netwealth Investments Limited<br>(NIL) – material outsourced serviced provider to<br>NSS | <b>Chief Financial Officer:</b><br><br>Netwealth Investments Limited (NIL)<br>ABN 85 090 569 109<br><br>Netwealth Holdings Ltd (NHL)<br>ABN 57 133 790 146<br><br>Netwealth Group Limited (NWL)<br>ABN 84 620 145 404<br><br>Netwealth Group Services Pty Ltd<br>ABN 89 135 940 840<br><br>Netwealth Fiduciary Services Pty Ltd<br>ABN 68 144 802 532<br><br>WealthTech Limited<br>ABN 92 637 362 460 | <b>Directorships:</b><br><br>Sumabo Pty Ltd<br>ABN 84 657 723 405<br><br>Usaily Pty Ltd<br>ABN 80 676 161 854<br><br>Stockdales Pty Ltd<br>ABN 80 676 161 854<br><br>Reindeer Properties (Mt Buller) Pty Ltd<br>ACN 098 102 400<br><br>Melbourne Girls Grammar- an Anglican<br>School<br>ABN 81 116 806 163<br><br>Friesian Pty Ltd<br>ABN 33 625 545 995<br><br>Friesian McColls Pty Ltd<br>ABN 33 625 547 588<br><br>McColl's Operations Pty Ltd<br>ABN 31 630 416 867<br><br>McColl's Equipment Pty Ltd<br>ABN 37 630 416 894<br><br>McColl's Group Holdings Pty Ltd | Salary and superannuation<br><br>No gifts or benefits disclosed |

|  |  |   |   |
|--|--|---|---|
|  |  | ABN 66 105 314 609<br><br>McColl's Transport Pty Ltd<br>ABN 30 052 199 167<br><br>McColl's Transport (Equipment) Pty Ltd<br>ACN 052 968 260<br><br>McColl's Tankers Pty Ltd<br>ABN 83 081 354 529<br><br>Friesian Property Pty Ltd<br>ABN 81 679 291 779<br><br>Friesian Property Truganina Pty Ltd<br>ABN 40 679 291 984 |   |
| <b>Jodie Henson</b><br><br>Senior Manager Responsible Person as Chief Legal, Risk and Governance Officer of Netwealth Investments Limited (NIL) – material outsourced serviced provider to NSS | <b>Company Secretary / Chief Legal, Risk and Governance Officer:</b><br><br>Netwealth Investments Limited (NIL)<br>ABN 85 090 569 109<br><br>Netwealth Holdings Ltd (NHL)<br>ABN 57 133 790 146<br><br>Netwealth Group Limited (NWL)<br>ABN 84 620 145 404<br><br>Netwealth Group Services Pty Ltd<br>ABN 89 135 940 840<br><br>Netwealth Fiduciary Services Pty Ltd<br>ABN 68 144 802 532<br><br>WealthTech Limited<br>ABN 92 637 362 460 | <b>N/A</b><br><br><b>Other positions:</b><br><br>Walter & Eliza Hall Institute of Medical Research<br>ABN 12 004 251 423 (Member Advocacy and Support Committee)  | Salary and superannuation<br><br>Direct NWL Shareholder<br><br>No gifts or benefits disclosed |

Netwealth Superannuation Services Pty Ltd

Note: The following companies provide products and / or services to the Netwealth Group Limited and its subsidiaries, including NSS: ANZ, CBA, Deloitte, Goldman Sachs, RSM and SW.

---

<sup>1</sup> Adviser uses the Netwealth platform